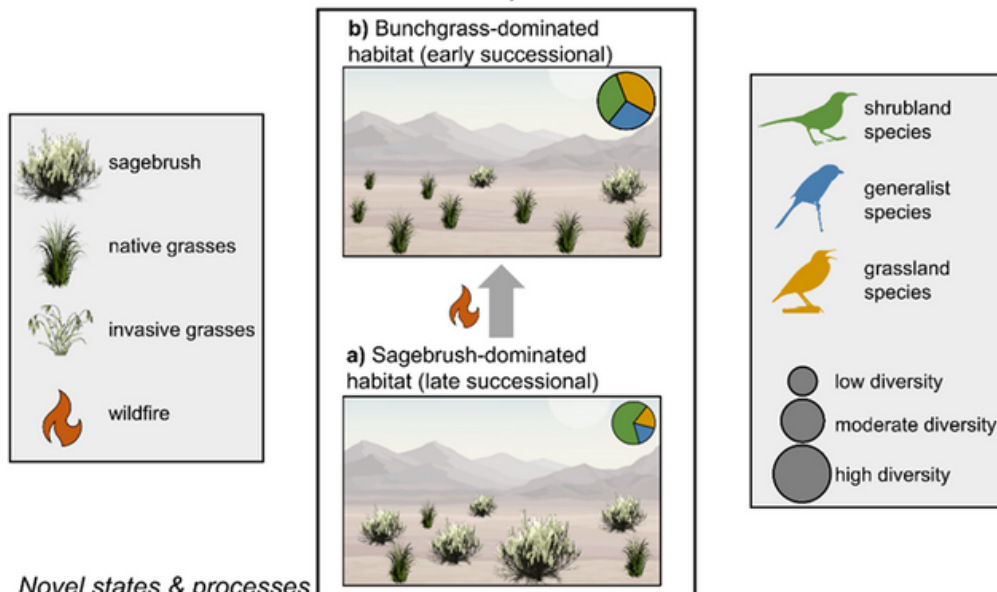


### Natural states & processes



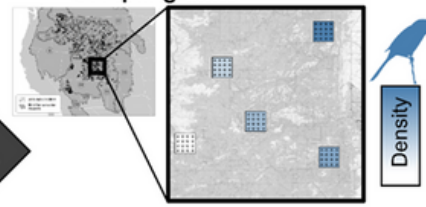
### Novel states & processes



**a) Raw IMBCR point count data**

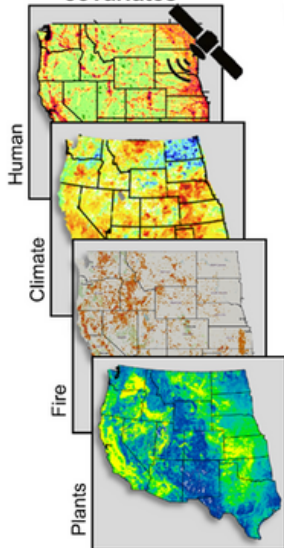


**b) Species densities within sampling units**

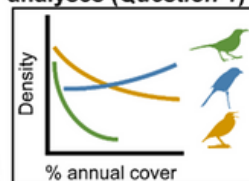


Account for imperfect detection

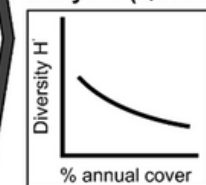
**c) Remote-sensed covariates**



**d) Local species-level analyses (Question 1)**



**e) Local community-level analyses (Question 2)**



**f) Regional species densities**



Calculate diversity using densities weighted by conservation concern score

$\times 14$   $\times 6$   $\times 9$

**g) Bird conservation value maps and summaries (Question 3)**



Mgmt unit	Value (0-1)	ET (%)
i	0.25	75
ii	0.65	30
iii	0.50	40